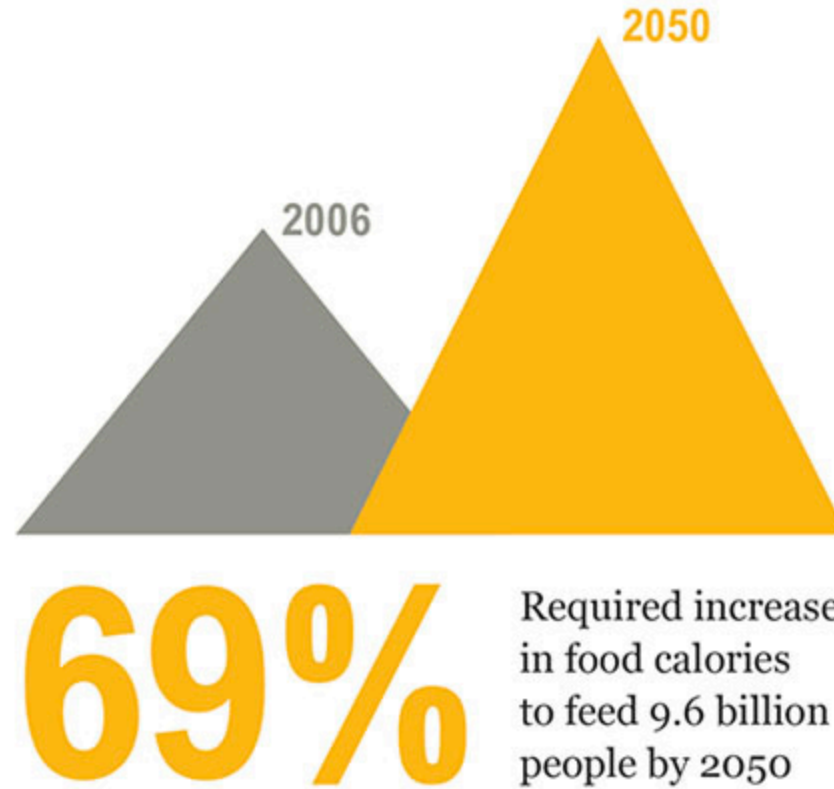




På vei mot produkter for humant konsum

Kjartan Sandnes, CSO Biomega Group AS






The global challenge



Some key figures

FAO OUTLOOK UNTIL 2050: TIMES 1.6!

Million metric tons

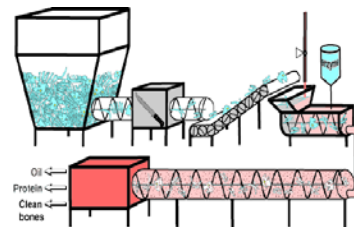
| PROTEIN TYPE | 2010 | 2050 | % CHANGE |
|--|---------------|---------------|------------|
|  BOVINE | 66.7 | 107.5 | 62% |
|  POULTRY | 98.9 | 201.9 | 104% |
|  PIGS | 109.3 | 150.3 | 38% |
|  AQUA | 59.9 | 113.7 | 90% |
|  MILK | 722.9 | 1119.7 | 55% |
| TOTAL | 1057.7 | 1693.1 | 60% |

Source: FAO Global Food Outlook November 2012/FAO World agriculture towards 2030/2050 - 2012 Rev/OECD FAO Ag Outlook 2013

The Biomega biorefining story



- 2000: Biomega AS established
- 2002: Production established with patented continuous enzymatic hydrolysis process.
- 2007: New site acquired for new factory.
- 2011: 30.000 tons raw materials processed.
- 2012: New plant with a capacity of 60.000 tons annually
- 2016: Acquired by Amerra Capital Management LCC, N.Y. Jørgen Horntvedt appointed CEO of Biomega Group AS.



Ny fabrikk for enzymatisk hydrolyse av skjærebein fra fjørfe vil starte produksjonen i Q3 - 2018



- Første av sitt slag
 - Joint venture mellom Felleskjøpet AS, Nortura and Norilia
 - Total kapasitet 16 000 tonn råvare
 - Bygges i tilknytning til Hærland, Norges største anlegg for slakting og foredling av fjørfe
 - Vil ta i bruk ny, innovativ teknologi for enzymatisk hydrolyse
 - Bygger på kompetanse og erfaring fra norsk fiske-industri
 - Bygger på omfattende testing av utstyr, prosess-parametre og styringssystem
 - Bygger på tester, analyser og resultater fra ulike forskningsprosjekt
- Grønn fabrikk – miljøvennlige løsninger



Emerging options

Mesopelagic



Seaweed

Mussels



Insects